

KARIBAN

REFERENCE : K243

SIZES : S_M_L_XL_XXL_3XL_4XL

COMPOSITION :

Main fabric : Combed cotton single pique - 220 100%cotton

Main fabric : Combed Cotton / Viscose single pique 90/10 - 220

90%cotton / 10%viscose

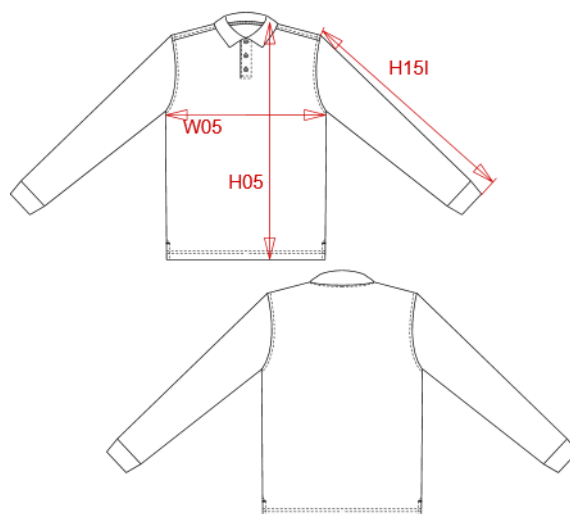
WEIGHT :

Main fabric : 220 gsm

Main fabric : 220 gsm

ARTICLE WEIGHT :

310 gr/pc



DESCRIPTION	
Français :	Polo homme manches longues
English :	Men's long sleeve pique polo shirt
Nederlands :	Heren polo met lange mouwen
Deutsch :	Herren langarm polo hemd pique
Español :	Polo de manga larga
Italiano :	Polo pique' uomo maniche lunghe
Português :	Polo de manga comprida

MEASUREMENT							
Description	S	M	L	XL	XXL	3XL	4XL
H05 (M) Hauteur totale / Total height	70	72	74	76	78	80	82
W05 (M) 1/2 largeur poitrine / 1/2 chest width	50	53	56	59	62	65	68
H15B (M) Longueur manche avec poignet / Sleeve length with cuff	65,25	66,25	67,25	68,25	69,25	70,25	71,25

CARE LABEL				

PACKING	
Box	25 pcs / box S => L:60cm W:40cm H:20cm GW:8.30kg NW:7.30kg M => L:60cm W:40cm H:20cm GW:8.70kg NW:7.70kg L => L:60cm W:40cm H:20cm GW:9.30kg NW:8.30kg XL => L:60cm W:40cm H:20cm GW:9.70kg NW:8.70kg XXL => L:60cm W:40cm H:20cm GW:10.20kg NW:9.20kg 3XL => L:60cm W:40cm H:20cm GW:10.80kg NW:9.80kg 4XL => L:60cm W:40cm H:20cm GW:11.30kg NW:10.30kg

COLORS	PANTONE SERIGRAPHIE
White	White
Black	Black
Navy	433C
Red	200C
Dark grey	447C
Dark khaki	418C
Orange	1585C
Chocolate	439C
Sky blue	278C
Tropical blue	7468C
Oxford grey	Based on Cool gray 7C
Yellow	1235C
Light royal blue	653C
Kelly green	7727C
Fuchsia	7425C
Purple	7447C
Wine	504C
Lime	367C
Forest green	5605C
Light sand	480C